

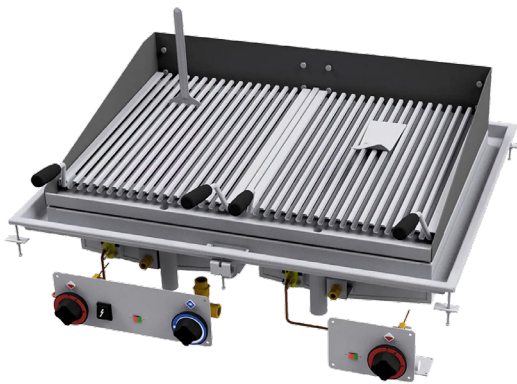
# Technical data sheet

Product features



## Lava stone grill drop-in gas 2x 38x52

<b>Model</b>	<b>SAP Code</b>	00014358
--------------	-----------------	----------



- Grid size [mm x mm]: 380x522
- Independent heating zones: Separate control for each heating zone
- Removable grid: Yes
- Ignition: Electric

<b>SAP Code</b>	00014358	<b>Power electric [kW]</b>	0.010
<b>Net Width [mm]</b>	900	<b>Loading</b>	230 V / 1N - 50 Hz
<b>Net Depth [mm]</b>	700	<b>Power gas [kW]</b>	18.000
<b>Net Height [mm]</b>	330	<b>Type of gas</b>	Natural gas, propane butane
<b>Net Weight [kg]</b>	94.00	<b>Grid size [mm x mm]</b>	380x522

# Technical data sheet

Technical drawing

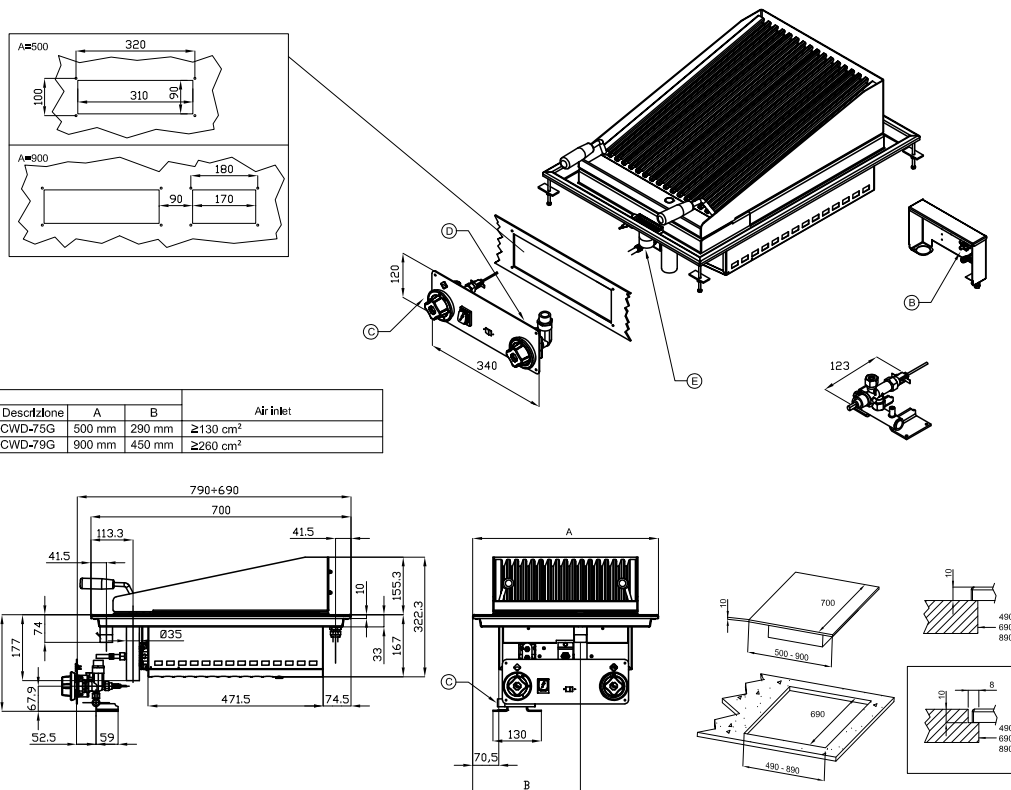


## Lava stone grill drop-in gas 2x 38x52

Model

SAP Code

00014358



Descrizione	A	B	Air inlet
CWD-75G	500 mm	290 mm	≥130 cm <sup>2</sup>
CWD-79G	900 mm	450 mm	≥260 cm <sup>2</sup>

A	Data plate		B	Electrical connection	
C	Gas connection	ISO 7-1 1/2" M	D	Cold water connection	ISO 7-1 1/2" F
E	Water drainage	ISO 7-1 1" M			

# Technical data sheet

Technical parameters



## Lava stone grill drop-in gas 2x 38x52

**Model**

**SAP Code**

00014358

**1. SAP Code:**

00014358

**2. Net Width [mm]:**

900

**3. Net Depth [mm]:**

700

**4. Net Height [mm]:**

330

**5. Net Weight [kg]:**

94.00

**6. Gross Width [mm]:**

1000

**7. Gross depth [mm]:**

750

**8. Gross Height [mm]:**

450

**9. Gross Weight [kg]:**

105.00

**10. Device type:**

Gas unit

**11. Construction type of device:**

Drop-in

**12. Power electric [kW]:**

0.010

**13. Loading:**

230 V / 1N - 50 Hz

**14. Power gas [kW]:**

18.000

**15. Ignition:**

Electric

**16. Type of gas:**

Natural gas, propane butane

**17. Independent heating zones:**

Separate control for each heating zone

**18. Removable grid:**

Yes

**19. Grid size [mm x mm]:**

380x522

**20. Connection to a ball valve:**

1/2